

InterWrite SchoolPad 400

Step 1: Turn on Equipment

Turn on the projector and computer and log-in. Once the computer finished loading all start-up programs turn on the InterWrite SchoolPad.

Step 2: Connect InterWrite SchoolPad

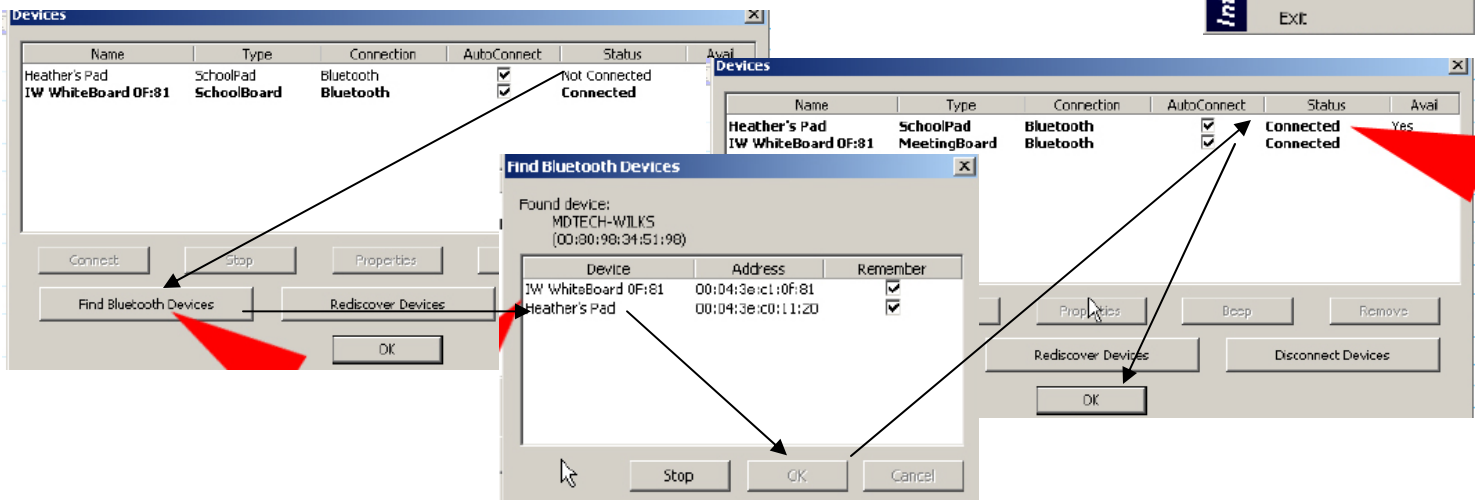
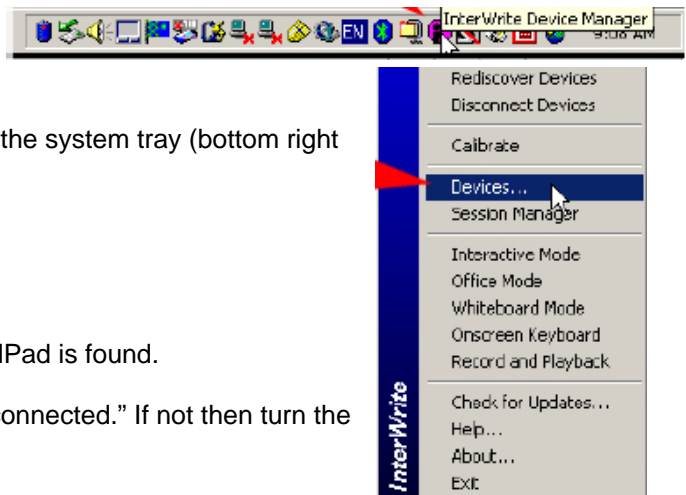
Right Click on the “InterWrite Device Manager” located on in the system tray (bottom right corner near the clock).

Select “Devices” from the menu.

From the “Devices” window select “Find Bluetooth Devices.”

Click “OK” on “Find Bluetooth Devices” window after the SchoolPad is found.

Click “OK” if the “Devices” window shows the pad’s status as “connected.” If not then turn the pad off then back on and repeat step 2.



Step 3: Shut Down Equipment

Turn off the SchoolPad and replace the “pen” back into the slot (this recharges the “pen”) located at the top of the pad. To turn off the projector press the power button. While projector displays “Power Off?” or “Shut Down?” press the power button a second time.

Problems?

Both computer and audio/visual support forms are located in the Staff workroom in FL1 or online at http://www.flc.losrios.edu/staff_resources/

Computer Emergencies:
 Computer Lab – (916) 608-6540
 Computer Help Desk – (916) 608-6561

Audio/Visual Emergencies:
 Day - (916) 608-6577 or (916) 608-6652
 Evening - (916) 608-6610